

Proposal to add specialist provision for autism and mental health at Waterside school, with effect from September 2018.

Statutory Consultation

Introduction

- 1 The Royal Borough of Greenwich has a statutory duty to ensure that there are sufficient school places for all residents who apply for one, and to make appropriate provision for children and young people with special educational needs.
- 2 As part of the Council's strategy to ensure there is a sufficient range of provision for pupils with special educational needs, the Royal Borough of Greenwich is consulting on a proposal to provide additional specialist provision at Waterside School, Robert Street, SE18 7NY, for up to eight pupils with autism and mental health needs.
- 3 This is a statutory consultation in accordance with the provisions of the Education and Inspections Act 2006 and The School Organisation (Prescribed Alterations to Maintained Schools)(England) Regulations 2013, and associated guidance.

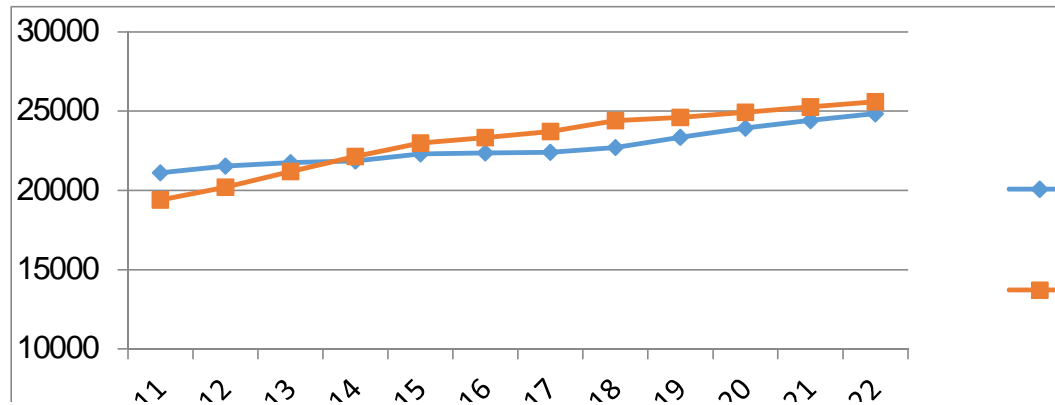
Proposal

4. Waterside School already provides primary special school provision for pupils with social, emotional and mental health difficulties. This proposal would provide for a unit for up to 8 primary aged pupils with autism and mental health needs by adaptation of existing space, but would not increase the overall size or capacity of the school.
5. The proposal would not adversely affect the operation of the current school nor adversely impact other schools, as it would contribute to a wider strategy to meet a growing need within the borough.
6. Admission to the proposed provision will be determined by the SEN Admissions Panel taking into account the ability of the provision to meet the needs of a child, the child's Education, Health and Care plan, and reports from parents and professionals. The proposal would widen the admission criteria to the school to include pupils with autism and mental health needs.

Context

7. The table below shows actual and forecast growth of the population aged 0 to 4, and 5 to 10. As the population increases over time, then it is expected that the provision of places for both mainstream and special needs places needs to grow too in order to keep pace.

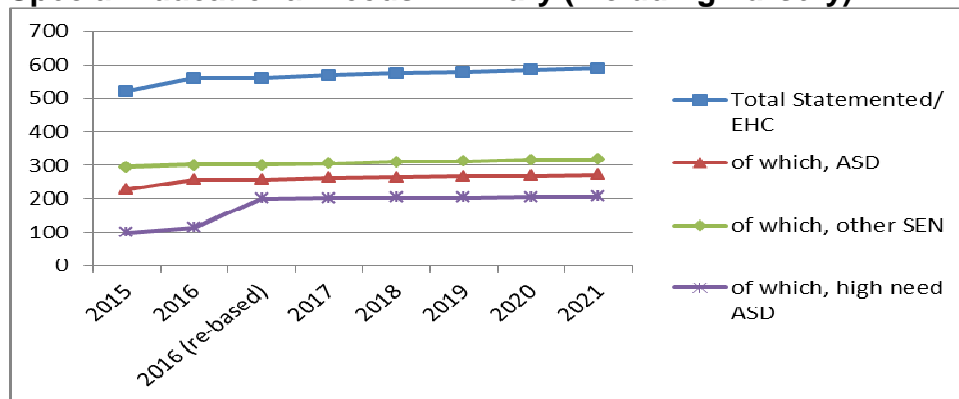
Royal Greenwich Population of young people 2012- 2022



Source: Greater London Authority

8. In line with the rising population, the number of children attending Royal Greenwich schools who have an Education and Health Care (EHC) Plan has been rising. Autistic Spectrum Disorder (ASD) continues to be the prevalent primary need for pupils with an EHC Plan; currently around 40% of primary need is ASD.
9. Assuming that the proportion of children with special educational needs or disabilities in the overall child population remains the same (overall around 3%), the predicted future need for primary aged pupils is set out below. In the table an adjustment has been made to the 2016 data to reflect the pressure for specialist ASD provision.

Special Educational Needs: Primary (including nursery)



Note: '2016 (re-based)' reflects adjustments to 2016 data to better reflect the pressure for high need places.

10. To meet this need there are currently 242 primary (inc nursery) phase special school places within the borough, and a further 100 Designated Specialist Provision (DSP) places in seven mainstream schools. Pupils with special education needs in mainstream schools, but who are not attached to a DSP, may also receive additional support according to their need. The June 2017 "School Place Planning and Capital Programme 2017/18 – 2019/20" report concluded that the borough would need, at the primary phase, around 100 additional specialist ASD places by 2021. This proposal, together with other

measures being taken across the borough, will help to ensure that going forward the borough will have the right balance of provision in place to meet the needs of pupils.

Funding the capital works

11. The Royal Borough of Greenwich would fund the project from within its available resources for investment in schools. The cost of the proposal is expected to be in the region of £80,000.

Statutory Consultation period - tell us your views

12. The statutory consultation will run from 14th May to 15th June 2018. Within this period any person may object to, support or comment on the proposal by:

email to: philip.watson@royalgreenwich.gov.uk ,

or, by post to:

Philip Watson,
School Place Planning,
Royal Borough of Greenwich Children's Services,
1st Floor, The Woolwich Centre,
35 Wellington Street
Woolwich, SE18 6HQ.



Royal Borough of Greenwich

**Proposal to add specialist provision for autism and mental health at
Waterside School, with effect from September 2018.**

Notice is given that the Royal Borough of Greenwich intends to make a prescribed alteration to Waterside School, Robert Street, SE18 7NY, a maintained special school, for additional specialised provision for up to eight pupils with autism and mental health needs, with effect from 1 September 2018.

This proposal would not affect existing provision or admission arrangements, other than that pupils of primary age with autism and mental health issues will be considered for admission to the school.

Further information can be obtained by visiting the Council's website at: <http://www.royalgreenwich.gov.uk/consultations>, or by email request to philip.watson@royalgreenwich.gov.uk.

Within the period 14th May to 15th June, any person may object to or make comments on the proposal by letter or email to:

Philip Watson
School Place Planning,
Royal Borough of Greenwich Children's Services,
1st Floor, The Woolwich Centre,
35 Wellington Street
Woolwich, SE18 6HQ.

email: philip.watson@royalgreenwich.gov.uk.

The last day of the consultation period will be 15th June 2018.

